



Nordic Energy  
Research

---

# Webinar for the Nordic or Nordic-Baltic PhD- and Researcher Mobility Programme Call 2022-2024

4<sup>th</sup> of October, 13.00-14.15 CEST

*The webinar will begin shortly*

# AGENDA

---



**Nordic Energy  
Research**

- **Introduction of Nordic Energy Research**  
*Kevin Johnsen & Nicki Carnbrand Håkansson*
- **Overview of the programme and previously funded projects**  
*Nicki Carnbrand Håkansson*
- **The call of 2021 and how to apply for funding**  
*Nicki Carnbrand Håkansson & Kevin Johnsen*
- **Questions & Answers**  
*Kevin Johnsen*

# WEBINAR RULES AND ETIQUETTE

## **We ask you to, please:**

- Mute your microphone.
- Write your questions and comments in the chat, they will be addressed in the end at the Q&A-session.
- Write concise messages that are coherent to the topic.
  
- We will distribute the word among the questioners. If needed, we might ask you to clarify your question orally.
- The slides and a compilation of the Q&A will be made available after the event.





# INTRODUCTION OF NORDIC ENERGY RESEARCH

*Who are we?*



Kevin Johnsen,  
Senior Adviser

[kevin.johnsen@nordicenergy.org](mailto:kevin.johnsen@nordicenergy.org)



Nicki Carnbrand Håkansson,  
Adviser

[nicki.hakansson@nordicenergy.org](mailto:nicki.hakansson@nordicenergy.org)



# OVERVIEW OF THE PHD AND RESEARCHER MOBILITY PROGRAMME

## *Background*



The Nordic or Nordic-Baltic PhD- and Researcher Mobility Programme was initiated in 2018.

The aim is to concretize the collaboration in energy research between universities and institutions in Nordic and Nordic-Baltic regions through mobility and networking grants.

The programme is administrated by Nordic Energy Research and financially supported by both the Board of Nordic Energy Research and the Programme Board of the Joint Baltic-Nordic Energy Research Programme (JBNERP).



Read more here:

<https://www.nordicenergy.org/project/the-nordic-or-nordic-baltic-phd-and-researcher-mobility-programme/>





# OVERVIEW OF THE PHD AND RESEARCHER MOBILITY PROGRAM

*Funded projects*

## **COSPACT**

The project Nordic-Baltic Co-Simulation Platform Towards Increasing the Stability of AC/DC Transmission Grids (COSPACT) gathers six Nordic and Baltic universities that are involved in power system research.

## **NFSNergy**

The Nordic Fire and Safety Network Focus on Energy (NFSNergy) is a consortium consisting of the major Nordic universities and research institutes dealing with fire safety and risk management.

## **ReMoNet**

The Nordic-Baltic PhD and Researcher Mobility Network in the Field of the Bioenergy (ReMoNet) aims to create an internationally recognized bioenergy network for PhD students and researchers.

## **CCU-net**

The project Material Technologies for Post-Combustion CO<sub>2</sub> Capture and Utilization Network (CCU-net) creates an academic network between four Nordic research groups with the aim to strengthen the interdisciplinary mobility for training of highly qualified researchers within CCU.

## **NordicRFB**

The Nordic Flow Battery Network (NordicRFB) promotes collaboration of flow battery research in the Nordic region through mobility and networking grants to PhD students and researchers. The project will share and discuss the best practices for testing and evaluating materials, cells, and stacks.

Read more here:

<https://www.nordicenergy.org/project/the-nordic-or-nordic-baltic-phd-and-researcher-mobility-programme/>



*How to apply for funding from*  
**Nordic Energy Research**





# How to apply for funding from **NORDIC ENERGY RESEARCH**

## **What kind of projects are we looking for?**

*Projects that aim to:*

- Develop, facilitate and create frameworks for collaboration and cooperation between research groups at higher education institutions, research institutions or industry in the Nordic or Nordic-Baltic regions;
- Offer mobility support to PhD students and/or researchers and to facilitate the creation of useful networks which bring added Nordic/Nordic-Baltic value to national research work.

## **What should be the key areas of research?\***

- Digitalisation;
- Energy markets;
- Energy storage;
- Green transport;
- Bioenergy; or
- Carbon capture, use and storage.

*\*We welcome cooperation in all academic approaches, e.g., engineering, natural science, social science, economics, or law; as well as interdisciplinary approaches.*

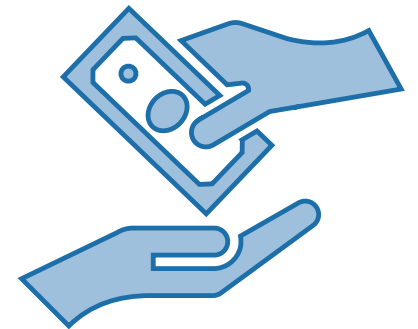




# How to apply for funding from **NORDIC ENERGY RESEARCH**

## What is the available budget and how much can you apply for?

- There is a total of **NOK 6 million** available for projects coordinated by Nordic or Nordic-Baltic constellations. Of this, **NOK 1 million** is specifically reserved for partners in Nordic-Baltic projects.
- A maximum of **NOK 1 million** is available per project for the entire project period.
- The recommended rates for PhD students or researchers, and for summer schools, courses and seminars are stipulated in the call text.
- Applicants for funds from Nordic Energy Research are required to abide by the EU state aid rules, including *de minimis*.





# How to apply for funding from **NORDIC ENERGY RESEARCH**

## **What are the eligibility criteria for funding?**

Applicants should observe that there are both general eligibility criteria and special eligibility criteria within this call.

Which of the special criteria that are to be fulfilled in addition to the general criteria, are dependent on the project's targeted participants (PhD students and/or researchers). If both types of academicians are to participate in the project, please make sure that the special criteria are fulfilled in both regards.

Proposals that do not meet one or more of the eligibility criteria, **will be disqualified**.



# How to apply for funding from **NORDIC ENERGY RESEARCH**

## What are the general eligibility criteria for funding?

1. The project is to be research-based and target one of the 6 key areas of energy research as outlined above under the section *“Aim of the call”*.
- 2a. For Nordic projects, the consortium must include a minimum of two Nordic HEI partners from two different Nordic countries and all partners therein that are applying for funding must be legally based in a Nordic country or their autonomous areas.
- 2b. For Nordic-Baltic projects, all partners applying for funding must be based in a Baltic country, Nordic country, or their autonomous areas, and **one** of the following criteria must be met:
  - The higher education institution coordinating the consortium is based in a Baltic country, or
  - At least two of the participating higher education institutions are based in a Baltic country.
3. The coordinating institution must be an approved higher education institution.
4. Letters of commitment signaling the institutional commitment of all participating partners must be provided together with the full proposal.

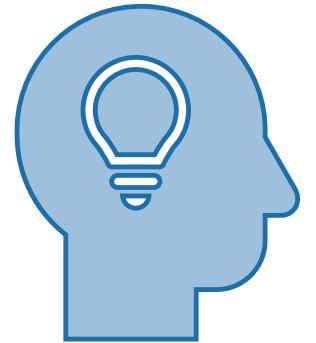


# How to apply for funding from **NORDIC ENERGY RESEARCH**

## What are the special eligibility criteria for funding?

For applications that seek funds for **PhD student mobility**:

1. The project must comply with current national regulations in order to ensure that it meets the requirements for activities within a PhD degree in the participating countries.
2. The project must include a student mobility period of at least 3, and up to 12 months, per PhD student, in at least one other Nordic country, autonomous area or Baltic country.



Projects which **include longer and more continuous mobility** periods within the above-mentioned timeframe in point 2, will be prioritized in the selection process.



# How to apply for funding from **NORDIC ENERGY RESEARCH**

## Bonus criteria for applications that seek funds for **PhD student mobility**:

A bonus prioritization will apply for applications that seek funds for PhD student mobility. Applications with projects that include longer, and more continuous mobility period will receive “extra points” at the end of the selection process. This means that, when the final score of the general criteria has been summarized, projects that have;

- a) 25 % or more of the budget allocated to PhD mobility;
- b) and a PhD student mobility period for at least two PhD students, that each sums up to between 6-12 months, will receive the following additional score, based on the length of the shortest mobility period of the PhD students:

- 6 months – 0,5 points
- 7 months – 0,7 points
- 8 months – 1 point
- 9 months – 1,5 points
- 10 months – 2 points
- 11 months – 2,5 points
- 12 months – 3 points



# How to apply for funding from **NORDIC ENERGY RESEARCH**

## Examples of the bonus criteria for PhD student mobility:

Application 1				
	Quality	Feasibility	PhD-bonus	Sum
Evaluator 1	3	3	1,5	16,5
Evaluator 2	4	5		

Application 2				
	Quality	Feasibility	PhD-bonus	Sum
Evaluator 1	3	3	0	15
Evaluator 2	4	5		

- 6 months – 0,5 points
- 7 months – 0,7 points
- 8 months – 1 point
- 9 months – 1,5 points
- 10 months – 2 points
- 11 months – 2,5 points
- 12 months – 3 points



# How to apply for funding from **NORDIC ENERGY RESEARCH**

## What are the special eligibility criteria for funding?

For applications that seek funds for researcher mobility:

1. The project is to include researcher mobility periods of up to six months in at least one other Nordic country, autonomous area or Baltic country.

For applications that seek funds for physical/digital summer schools, courses, seminars, or similar activities.

There are no special criteria for applications that seek funds for summer schools. Instead, general eligibility criteria apply.





# How to apply for funding from **NORDIC ENERGY RESEARCH**

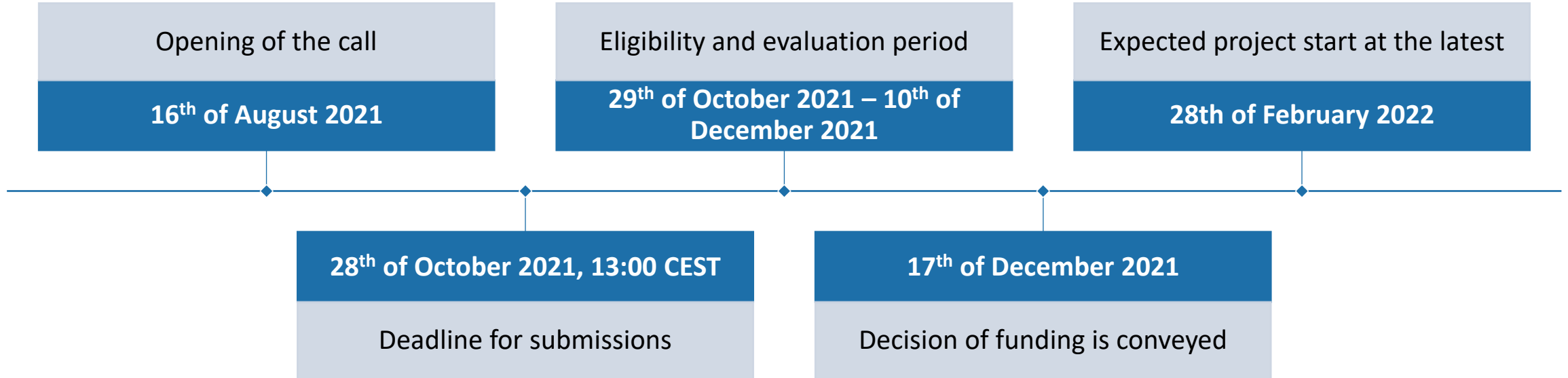
## Key messages from us

- The project consortia are required to submit an application through **the official application portal** to be considered valid. Please note that a draft can be saved several times before submitting the final project.
- Nordic Energy Research require that all relevant eligibility criteria are fulfilled. Thus, possible applicants are encouraged to **doublecheck that both general and special eligibility criteria are fulfilled** before submitting their application.
- Eligible applications are evaluated based on quality of curriculum and relevance, feasibility of deliverables and milestones, as well as Nordic or Nordic-Baltic added value. Applicants that **consistently consider these evaluation criteria throughout their project** will have a greater chance of receiving funding.
- We highly recommended to **carefully read through the requirements** stated in the call text and to contact Nordic Energy Research to sort out any questions that you might have thereafter.





# IMPORTANT MILESTONES



# IMPORTANT LINKS

The information page on funding at the Nordic Energy Research-website:

<https://www.nordicenergy.org/call/call-for-proposals-involving-nordic-or-nordic-baltic-phd-and-researcher-mobility-and-networking-activities/>

The background information about the programme:

<https://www.nordicenergy.org/project/the-nordic-or-nordic-baltic-phd-and-researcher-mobility-programme/>

The official application portal:


<https://funding.nordforsk.org/portal/#call/2385>

The Nordic Energy Research Standard Terms and Conditions of Contract:

<https://www.nordicenergy.org/wordpress/wp-content/uploads/2012/01/The-Nordic-Energy-Research-Standard-Terms-and-Conditions-of-Contract.pdf>



Questions  
&  
Answers



Thank you for your  
attention!



Kevin Johnsen,  
[kevin.johnsen@nordicenergy.org](mailto:kevin.johnsen@nordicenergy.org)



Nicki Carnbrand Håkansson,  
[nicki.hakansson@nordicenergy.org](mailto:nicki.hakansson@nordicenergy.org)